



15 Ash Grove, Radlett
WD7 9FE
75% Shared Ownership £266,250

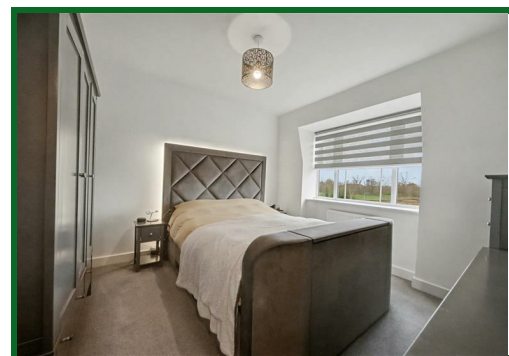
75% Shared Ownership Shenley Estates are delighted to offer for sale, this second floor, two double bedroom apartment located within the ever popular "Harperbury Park" Development. These apartments are sought after as they offer generous living space in a lovely setting.

There is 120 years left on the original 125 year lease, and we are offering for sale a 75% share at £266,250 which is then supplemented with a monthly rent of £274.54.

Built by "Bloor Homes" in 2021, this spacious flat benefits from an open plan living/dining/kitchen area, two sizeable double bedrooms and a bathroom. The property also benefits from being well maintained, has ample storage and access to a communal garden to the rear as well as an allocated parking bay and bike shed.

This bright, airy apartment would suit first time buyers and downsizers alike. Immediate viewing is highly recommended.

EPC Rating Band B.



Entrance Hall

Lounge Diner
19'4 x 10'3 (5.89m x 3.12m)

Kitchen
8'2 x 7'5 (2.49m x 2.26m)

Bedroom One
10'8 x 11'3 (3.25m x 3.43m)

Bedroom Two
10'1 x 9'1 (3.07m x 2.77m)

Bathroom

Communal Garden

Parking
One allocated bay in the communal car park

Energy Efficiency Rating		
	Current	Potential
Very energy efficient - lower running costs		
(92 plus) A		
(81-91) B		
(69-80) C		
(55-68) D		
(39-54) E		
(21-38) F		
(1-20) G		
Not energy efficient - higher running costs		
	83	83
England & Wales		
EU Directive 2002/91/EC		

Environmental Impact (CO ₂) Rating		
	Current	Potential
Very environmentally friendly - lower CO ₂ emissions		
(92 plus) A		
(81-91) B		
(69-80) C		
(55-68) D		
(39-54) E		
(21-38) F		
(1-20) G		
Not environmentally friendly - higher CO ₂ emissions		
England & Wales		
EU Directive 2002/91/EC		



20 Andrew Close, Shenley | Herts WD7 9LP
Tel: 01923 856464 | Email: info@shenleyestates.com

